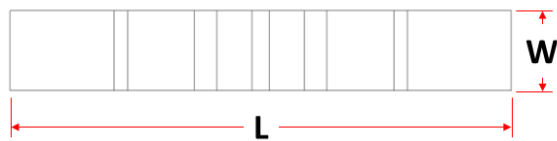
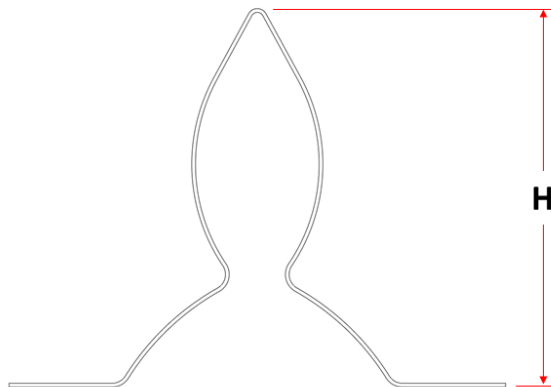


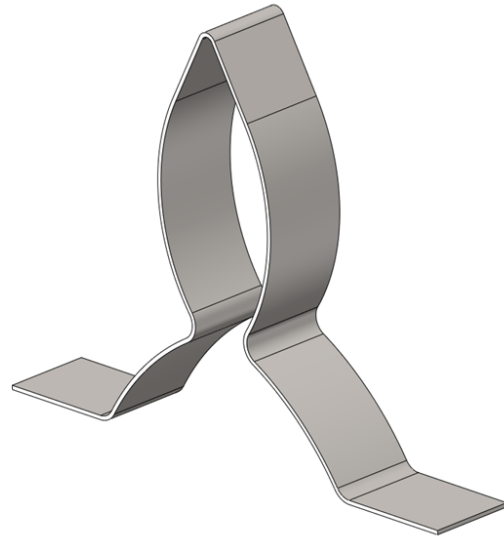
Post Shore Spring Clips ease the reshoring set-up and stripping processes.



**Top View**



**Front View**



*Image is for reference only.*

Product Code	Description	Dimensions in [mm]			Weight Lbs [kg]
		W	L	H	
SHSPCL	Post Shore Spring Clip	1.0 [25.4]	6.3 [159.0]	4.8 [121.0]	0.18 [0.08]

### Notes:

- For reshoring applications mainly.
- Made of Stainless Steel for corrosion resistance.

### Disclaimers

1. DSS recommends that all the job layouts be designed by a qualified person, as defined in ANSI 10.8:2001 section 3.63, and that all erection and dismantling be performed under the supervision and direction of a competent person as defined in OSHA 29 CFR 1926 Sub-part L.
2. Always consider the load bearing capabilities of all components in the system and all loads that will be applied when using this equipment.
3. Published values are true for components in good condition. DSS recommends inspecting each component before use.