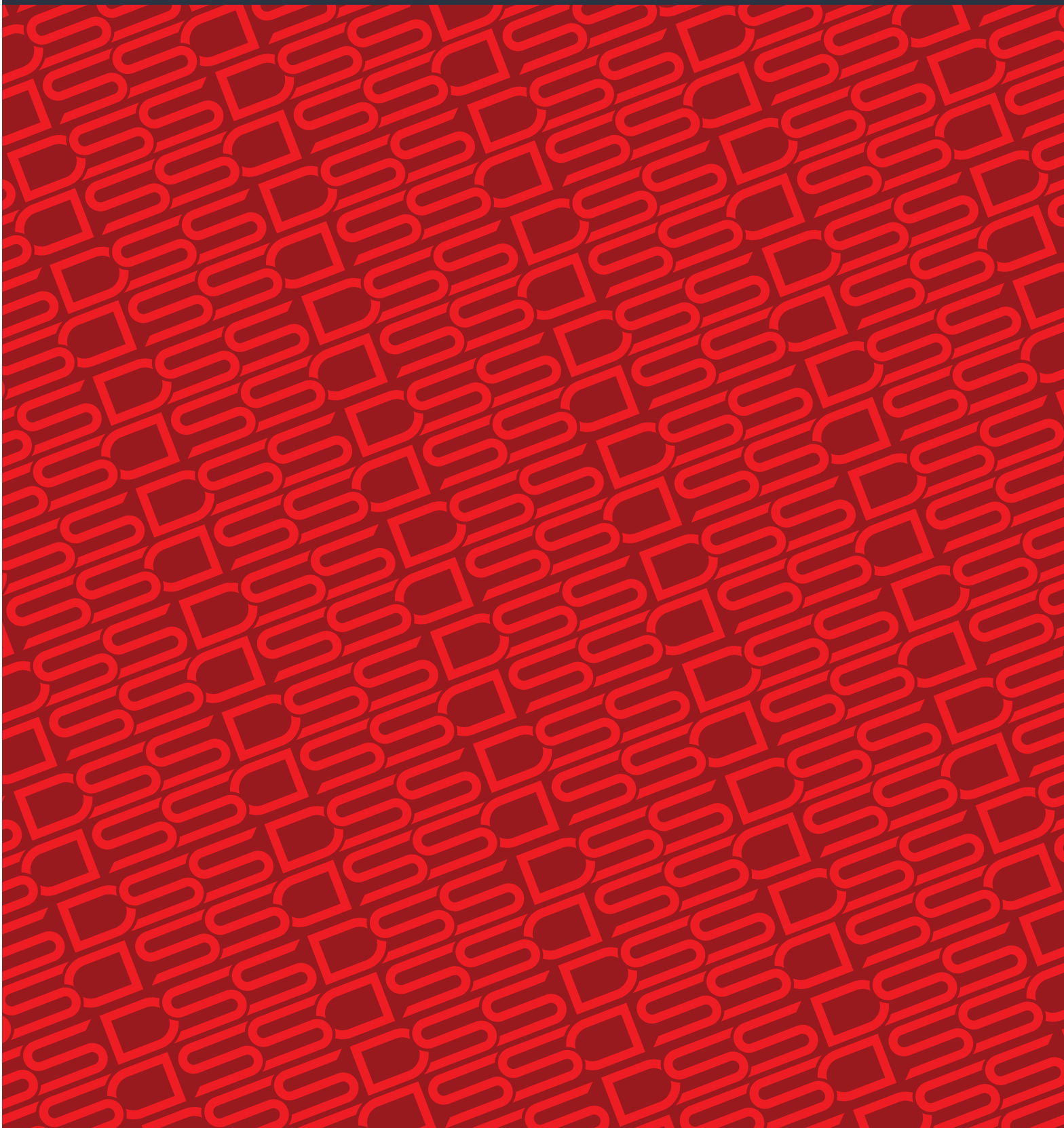


STORAGE



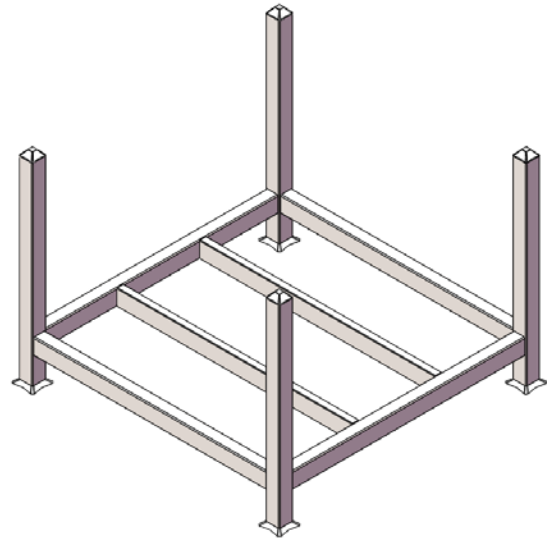
SHIPPING RACK

STORAGE EQUIPMENT

The Shipping Rack provides an effective and efficient way to store and transport equipment.

ADDITIONAL INFORMATION

- Stack up to 5 high on a leveled surface
- Mud Sills required on unpaved surfaces
- Load rating based on a 4:1 safety factor
- **Material:** Steel
- **Finish:** Powder Coated Finish



Part No.	Description	Dimensions				Safe Working Load	Weight
		A	B	L	W		
RKSRO	Shipping Rack	44.01" 1117.8 mm	26.5" 673.1 mm	39.39" 1000.5 mm	34.28" 870.6 mm	5,500 lb 2,500 kg	110.44 lb 50.09 kg

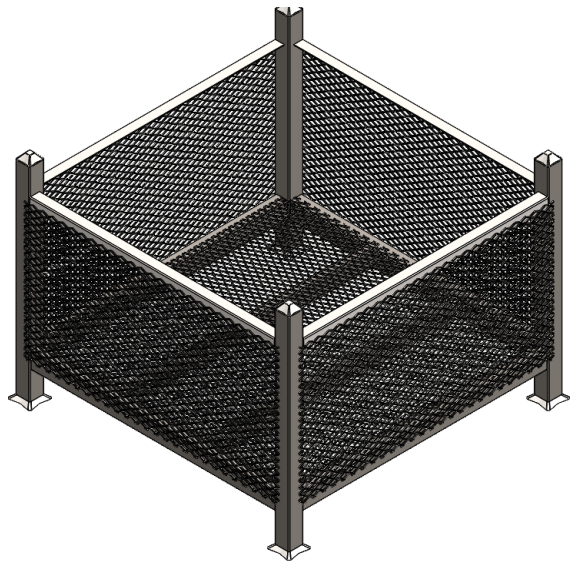
SHIPPING BASKET

STORAGE EQUIPMENT

The Shipping Basket provides an effective and efficient way to store and transport equipment.

ADDITIONAL INFORMATION

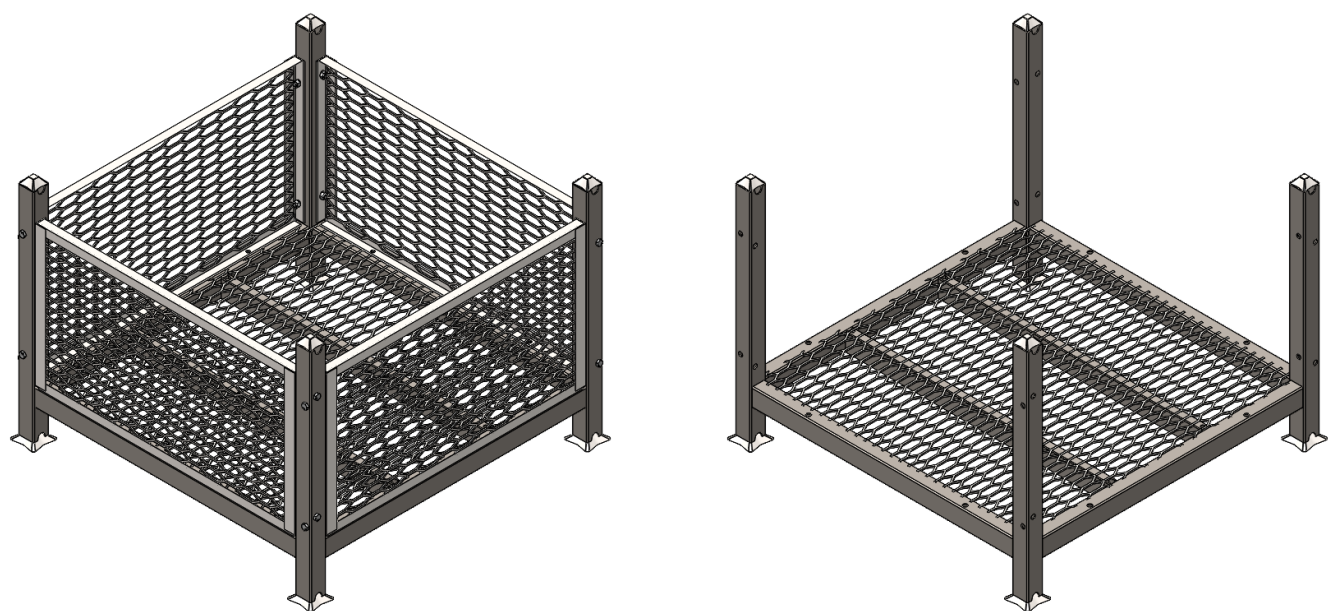
- Stack up to 5 high on a leveled surface
- Mud Sills required on unpaved surfaces
- Load rating based on a 4:1 safety factor
- **Material:** Steel
- **Finish:** Powder Coated Finish



Part No.	Description	Dimensions				Safe Working Load	Weight
		A	B	L	W		
RKSRB	Shipping Basket	44.01" 1117.8 mm	21.19" 538.2 mm	39.39" 1000.5 mm	34.28" 870.6 mm	5,500 lb 2,500 kg	168.1 lb 76.20 kg

SHIPPING BASKET WITH REMOVABLE MESH PANELS

STORAGE EQUIPMENT



The Shipping Basket with Removable Mesh Panels gives the user the versatility for storage and transport solution with bolted removable mesh panels.

ADDITIONAL INFORMATION

- Stack up to 5 high on a leveled surface
- Mud Sills required on unpaved surfaces
- Load rating based on a 4:1 safety factor
- **Material:** Steel
- **Finish:** Powder Coated Finish

Part No.	Description	Dimensions				Safe Working Load	Weight
		A	B	L	W		
RKSRB4R	Shipping Basket with Removable Mesh Panels	44.01" 1,117.8 mm	21.46" 545.0 mm	39.39" 1,000.5 mm	34.28" 870.6 mm	5,500 lb 2,500 kg	206.26 lb 93.56 kg

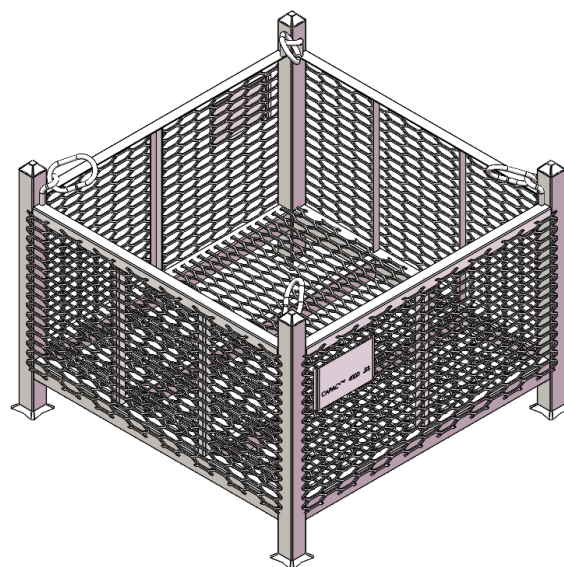
SHIPPING FLYING BASKET

STORAGE EQUIPMENT

Shipping Flying Baskets are made from strong steel and used whenever there is the need to lift equipment to high locations.

ADDITIONAL INFORMATION

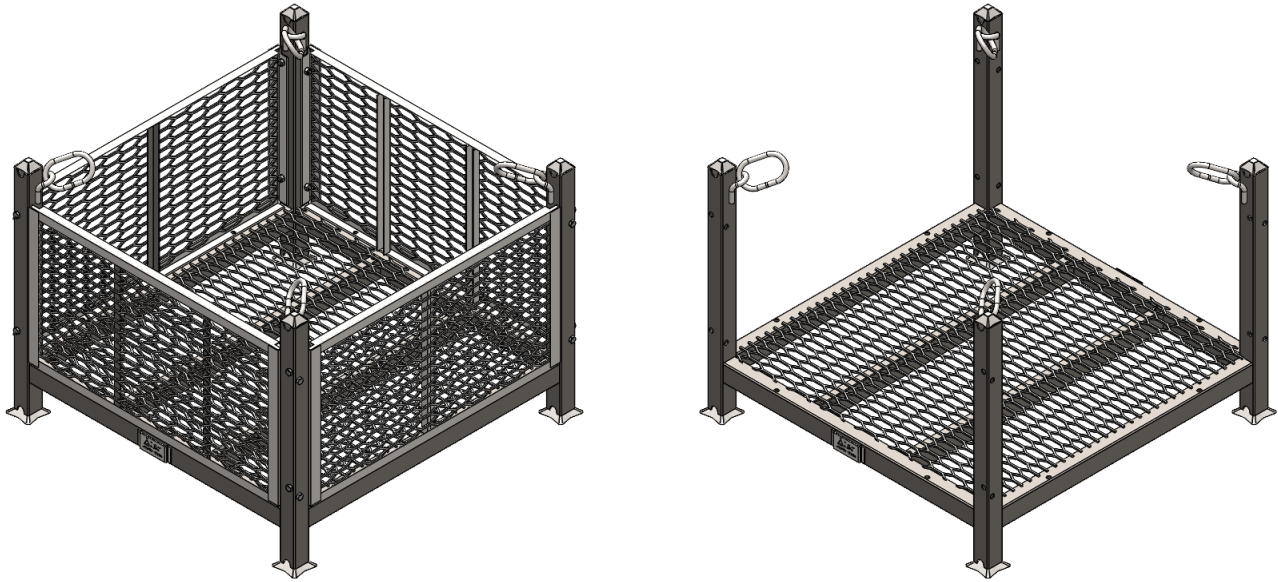
- Stack up to 5 high on a leveled surface
- Mud sills are required on unpaved surfaces
- Load rating based on a 5:1 safety factor
- Steel mesh is comparable to #3 expanded metal
- Suitable for lifting from the bottom with forklift or from the shackles with a sling crane
- **Material:** Steel
- **Finish:** Powder Coated Finish



Part No.	Description	Dimensions				Safe Working Load	Weight
		A	B	L	W		
RKSRBFB	Steel Flying Basket	44.00" 1,117.5 mm	24.24" 615.6 mm	39.39" 1,000.5 mm	34.28" 870.6 mm	4,000 lb 1,814 kg	202.5 lb 91.8 kg

SHIPPING FLYING BASKET W/ REMOV. MESH PANELS

STORAGE EQUIPMENT



The Shipping Flying Basket with Removable Mesh Panels are made from strong steel and used whenever there is the need to lift equipment to high locations. The removable mesh panels allow for versatility for loading and storage.

ADDITIONAL INFORMATION

- Stack up to 5 high on a leveled surface
- Mud sills are required on unpaved surfaces
- Load rating based on a 5:1 safety factor
- Steel mesh is comparable to #3 expanded metal
- Suitable for lifting from the bottom with forklift or from the shackles with a sling crane
- **Material:** Steel
- **Finish:** Powder Coated Finish

Part No.	Description	Dimensions				Safe Working Load	Weight
		A	B	L	W		
RKSRBFB4R	Steel Flying Basket with 4 Mesh Panels	44.01" 1,117.8 mm	21.46" 545.0 mm	39.39" 1,000.5 mm	34.28" 870.6 mm	4,000 lb 1,814 kg	223.96 lb 101.80 kg

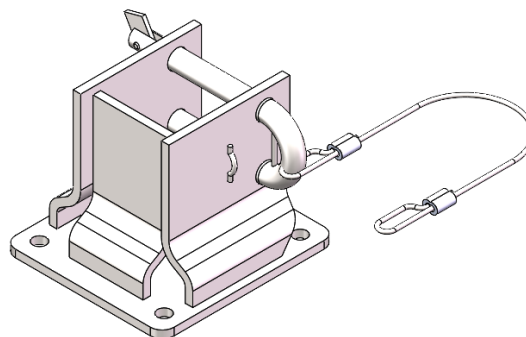
RACK / BASKET CASTER ADAPTER

STORAGE EQUIPMENT

The Basket Caster Adapter allows the rack/basket to be mounted onto casters for safe and efficient transport in localized areas.

ADDITIONAL INFORMATION

- Allows for bolting on of mud sills for uneven terrain
- **Material:** Steel
- **Finish:** Hot Dipped Galvanized



Part No.	Description	Weight
CASRBA	Rack/Basket Caster Adapter Hinge Pin	5.7 lb 2.58 kg

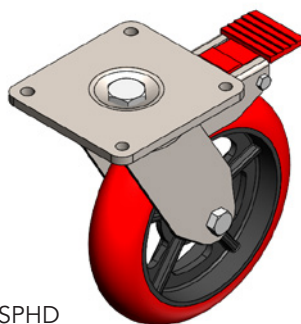
RACK / BASKET 8" CASTER

STORAGE EQUIPMENT

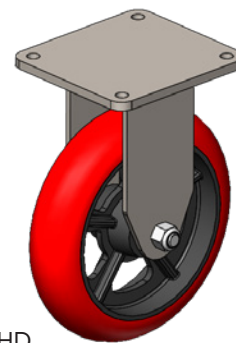
The 8" Casters allow the user to convert any rack/basket into a rolling basket that can also be steered when using swivel casters. Use in conjunction with the Caster Adapters CASRBA.

ADDITIONAL INFORMATION

- Safe working load includes a 4:1 factor of safe
- **Wheel:** Polyurethane with Iron Core
- **Bracket:** Hot Dip Galvanized Steel



CAS8SPHD



CAS8RPHD

Part No.	Description	Safe Working Load	Weight
CAS8SPHD	8" Swivel Caster	4,000 lb / 1,814 kg	17.2 lb / 7.80 kg
CAS8RPHD	8" Rigid Caster	3,800 lb / 1,724 kg	13.1 lb / 5.9 kg