

# DSS BRIDGE OVERHANG BRACKETS

## DSS BRIDGE OVERHANG BRACKET SYSTEM



DSS Bridge Overhang Brackets provide adjustable deck support for both steel and precast concrete beams.

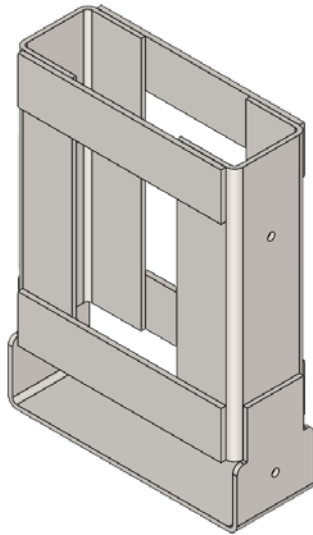
### ADDITIONAL INFORMATION

- Vertical and Diagonal members have adjustability every 2"
- Diagonal leg load rating of 3,750 lb is based on a 2:1 safety factor
- **Material:** Carbon Steel
- **Finish:** Powder Coated

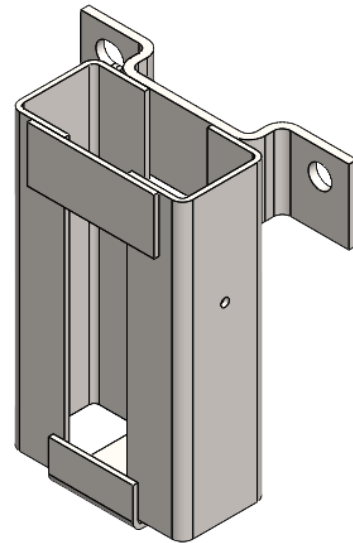
Part No.	Description	Extension Length			Safe Working Load	Weight
		Min Height	Max Height	Length		
SHBOB3050+10	Standard Overhang Bracket	30" 762 mm	50" 1270 mm	54" 1371.6 mm	3,750 lb 16.68 kN	46.96 lb 21.30 kg
SHBOB5070+10	Deep Overhang Bracket	50" 1270 mm	70" 1778 mm	54" 1371.6 mm	3,750 lb 16.68 kN	52.80 lb 23.95 kg
SHBOB1628+10	Junior Overhang Bracket	16" 406.4 mm	28" 711.2 mm	27" 685.8 mm	3,750 lb 16.68 kN	27.06 lb 12.27 kg

# DSS GUARD RAIL RECEPTACLES

## DSS BRIDGE OVERHANG BRACKET SYSTEM



SHBOBGRR2X6



SHBOBGRR2X4

Guard Rail Receptacles are designed for easy installation of guard rail posts.

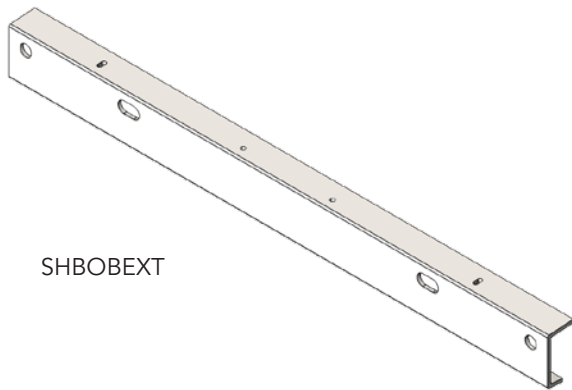
### ADDITIONAL INFORMATION

- The SHBOBGRR2X4 Guardrail Receptacle bolts directly to the Bridge Overhang Bracket or to the Overhang Bracket Extender and allows the easy installation of an OSHA required lumber guard rail post. The 2x4 Guardrail Receptacle ships with two ½"-13 UNC x 3" long electro-galvanized bolts and nuts for attachment.
- The SHBOBGRR2X6 Guardrail Receptacle slips over the end of a 2x6 nailer on the overhang bracket and allows the easy installation of an OSHA required guard rail post. The 2x6 Guardrail Receptacle is attached to the nailer with two 16d double headed nails through the provided holes.
- **Material:** Carbon Steel
- **Finish:** Powder Coated

Part No.	Description	Weight
SHBOBGRR2X4	2"x 4" Guard Rail Receptacle	3.08 lb / 1.4 kg
SHBOBGRR2X6	2"x 6" Guard Rail Receptacle	4.61 lb / 1.89 kg

# DSS BRACKET EXTENDER

## DSS BRIDGE OVERHANG BRACKET SYSTEM



SHBOBEXT

DSS Bridge Overhang Bracket Extenders provide additional walkway surface to the Bridge Overhang Bracket.

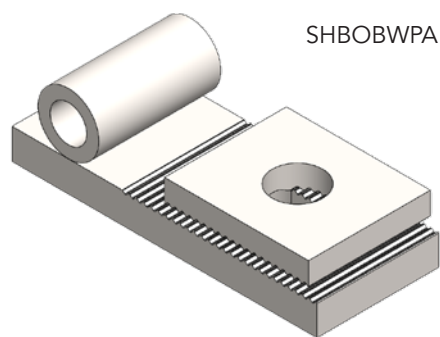
### ADDITIONAL INFORMATION

- The Extender is used to support walkway loads only
- Attaches to one side of the outboard end of a Bridge Overhang Bracket and allows for an additional 17" of usable walkway surface
- Ships with two ½"-13 NC x 1" long electro-galvanized bolts and nuts for attaching the 2x4 Guardrail Receptacle to the Extender
- The ½"-13 NC x 3" bolts and nuts (shipped with the SHBOBGRR2X4 Guard Rail Receptacle) are used to attach the Extender to the horizontal on the Bridge Overhang Bracket
- **Material:** Carbon Steel
- **Finish:** Powder Coated

Part No.	Description	Weight
SHBOBEXT	Overhang Bracket Extender	4.61 lb / 2.09 kg

# DSS WALL PLATE ASSEMBLY

## DSS BRIDGE OVERHANG BRACKET SYSTEM



SHBOBWPA

The Wall Plate Assembly is an adjustable attachment plate that allows direct connection of a Bridge Overhang Bracket to a concrete wall or precast bridge beam.

### ADDITIONAL INFORMATION

- The serrated face of the plate and washer allows for 13/16" of vertical adjustment
- Only used as a set, not to be used without the serrated washer
- Use only ¾" diameter bolts (not included) for attachment to concrete wall or bridge beam
- **Material:** Carbon Steel
- **Finish:** Powder Coated

Part No.	Description	Weight
SHBOBWPA	WALL PLATE ASSEMBLY	1.92 lb / 0.87 kg