

The Forkhead 2-Way is a post shore accessory used to secure and stabilize timber beams.

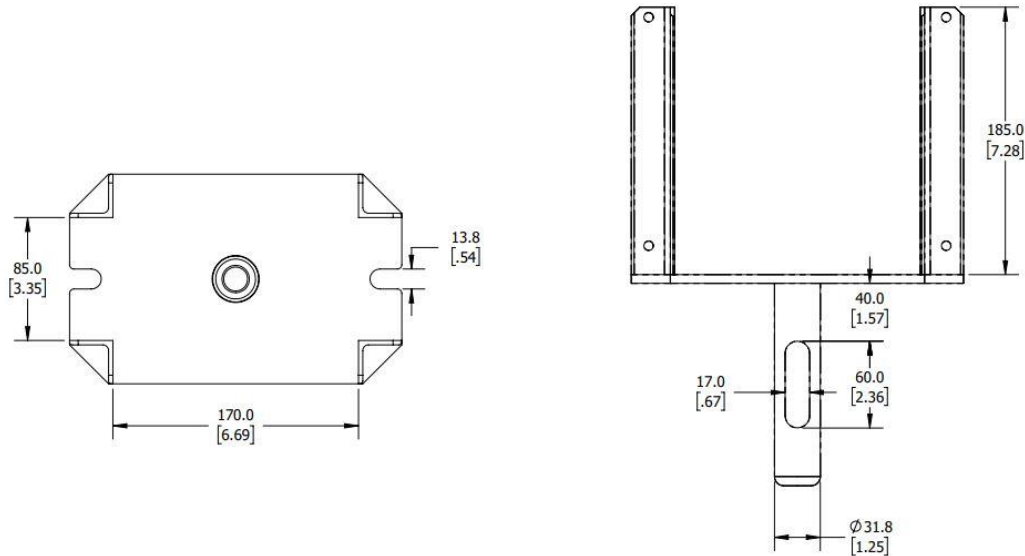


Image is for reference only.

Part No.	Description	Weight lbs [Kg]
SHFHH20G	Forkhead 2-Way	5.72 [2.6]

Features:

- Compatible with H20 Beams (timber beams)
- Compatible with most Post Shores
- Material: Steel
- Finish: Hot dip galvanized

Disclaimers

1. DSS recommends that all the job layouts be designed by a qualified professional engineer and that all erection and dismantling be performed by Qualified Personnel.
2. Always consider the load bearing capabilities of all components in the system and static loads when using this equipment.
3. Published values are true for components in good condition. DSS recommends inspecting each component before use.